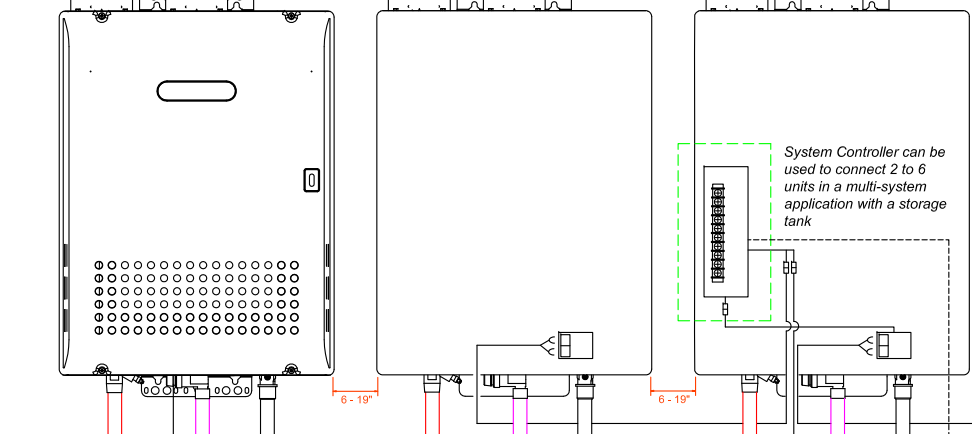


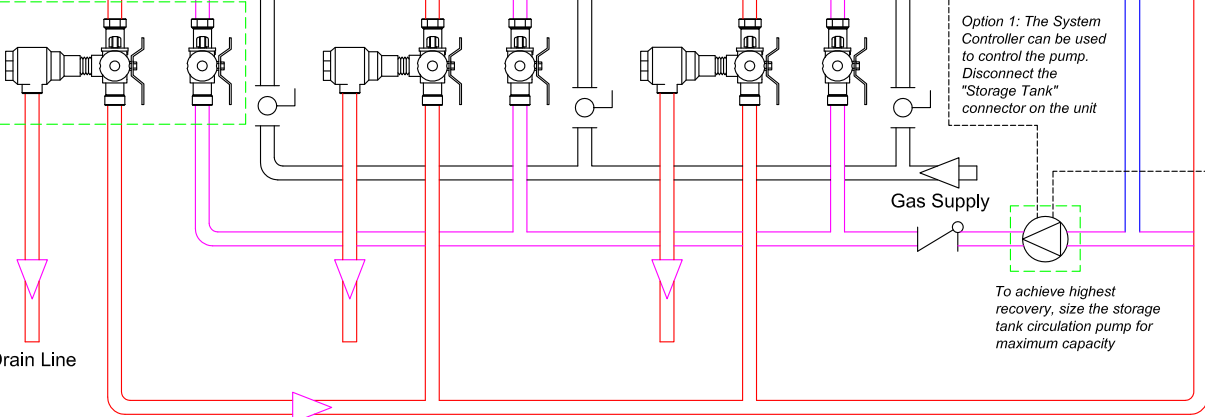
Refer to the VT4-TS manual for detailed instructions prior to installing the termination to the water heater. For cold weather installations, use of the VT4-TL is recommended.



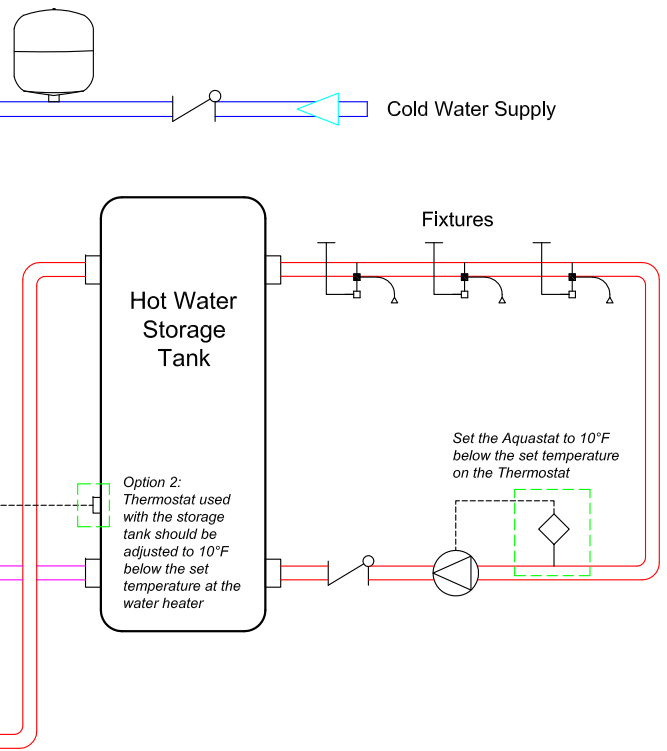
System Controller can be used to connect 2 to 6 units in a multi-system application with a storage tank

Isolator Kits include integrated shut-off and service valves with unions and a pressure relief valve

Option 1: The System Controller can be used to control the pump. Disconnect the "Storage Tank" connector on the unit



To achieve highest recovery, size the storage tank circulation pump for maximum capacity



Set the Aquastat to 10°F below the set temperature on the Thermostat

Option 2: Thermostat used with the storage tank should be adjusted to 10°F below the set temperature at the water heater

NORITZ
11160 Grace Avenue
Fountain Valley, California 92708
866-7NORITZ (866-766-7489)
www.noritz.com

MODEL	EQUIPMENT LIST		
	Item	Part Number	Qty
APPLICATION Commercial Recirculation Multi-Unit System Controller Storage Tank	Noritz DV Model Tankless Water Heater	NC----DV(-ASME)	2-6
	Remote Controller	RC-7649M	1
	Remote Controller Cord	RC-CORD10	1
	System Controller	SC-201-6M	1
	Isolator Kit	IK-WV-___	2-6
	Vent Termination (for -DV Models Only)	VT4-T___	2-6
	Pipe Cover	PC-___S	2-6
	Storage Tank	Field Supplied	1
	Thermostat	Field Supplied	1
	Expansion Tank	Field Supplied	1
DRAWING NUMBER	Pump	Field Supplied	1
	Aquastat	Field Supplied	1
DRAWING DATE October 13, 2009	Globe Valve	Field Supplied	1
	Check Valve	Field Supplied	2

Note: This diagram is for reference only. Installation must comply with State and Local Code, all gas and water pipe must be sized correctly to specific length, according to accepted engineering methods or the UPC Code for Noritz Water Heaters to operate correctly.

