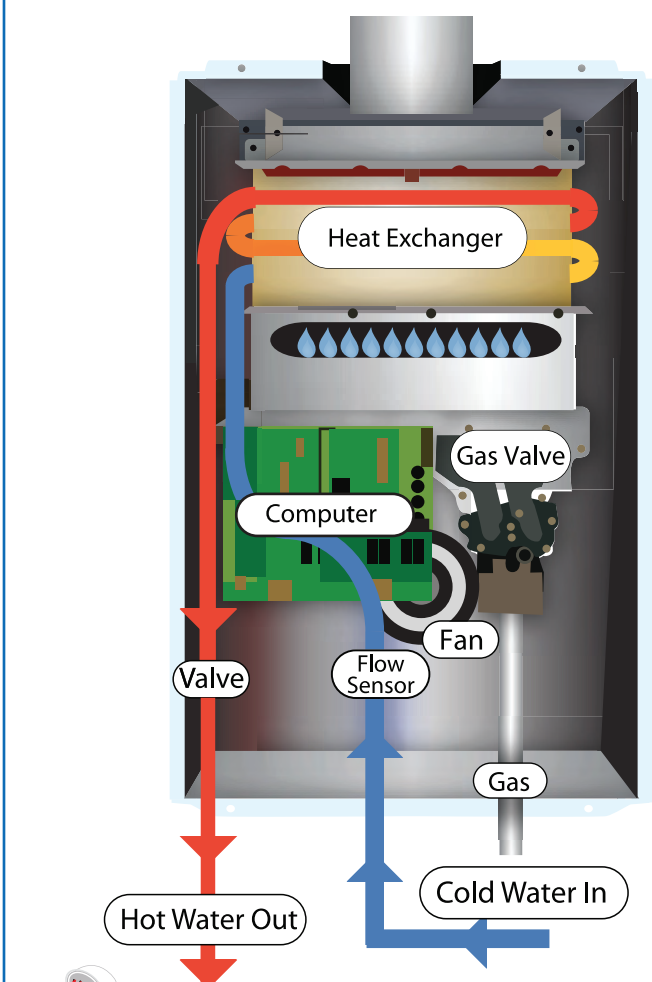


HOW DOES A TANKLESS WATER HEATER WORK?



- THE PROCESS:**
1. A hot water tap is turned on.
 2. Water enters the heater.
 3. The flow sensor detects the water flow.
 4. The computer automatically ignites the burner.
 5. Water circulates through the heat exchanger.
 6. The heat exchanger heats the water to the designated temperature.
 7. When the tap is turned off, the unit shuts off.

NORITZ AMERICA OFFICES AND SHOWROOMS

Call: (888) 456-6748
Visit: www.noritz.com/hotwater

<p>Headquarters 11160 Grace Avenue Fountain Valley, CA 92708 P: (888) 382-6568 F: (714) 241-1514</p>		<p>Showroom Hours: 9AM- 5PM Monday-Friday (By Appt. Only)</p>
<p>Atlanta Branch 1220 N. Kennestone Circle Marietta, GA 30066 P: (888) 382-6568 F: (770) 422-0184</p>		<p>Showroom Hours: 9AM- 5PM Monday-Friday (By Appt. Only)</p>
<p>Chicago Branch 861 Busse Road Elk Grove Village, IL 60007 P: (888) 382-6568 F: (847) 472-6885</p>		<p>Showroom Hours: 9AM- 5PM Monday-Friday (By Appt. Only)</p>
<p>Dallas Branch 720 Industrial Blvd, Suite 200 Grapevine, TX 76051 P: (888) 382-6568 F: (817) 421-0033</p>		<p>Showroom Hours: 9AM- 5PM Monday-Friday (By Appt. Only)</p>
<p>New York Branch 12 Skyline Drive Hawthorne, NY 10532 P: (888) 382-6568 F: (914) 345-3288</p>		<p>Showroom Hours: 9AM- 5PM Monday-Friday (By Appt. Only)</p>



NORITZ

TANKLESS IS GREEN
SAVE ENERGY. SAVE MONEY.



STOP WASTING MONEY... GO TANKLESS & SAVE!

Tankless Is Green

NORITZ IS GREEN

Just by purchasing a Noritz tankless water heater you help...

Use Less Energy.

According to the U.S. Department of Energy (DOE) tankless water heaters are expected to achieve a 30 percent reduction in energy use and save a consumer approximately \$108 in annual energy costs compared to a typical gas storage water heater.

Reduce Global Warming.

In five years, the DOE states that Americans can save \$780 million in utility costs, avoid 4.2 million tons of carbon dioxide emissions and achieve cumulative energy savings of more than 3.9 billion kilowatt-hours and 270 million therms natural gas by using high efficiency water heaters.

Produce Less Waste.

According to the DOE the average tank water heater has a lifespan of 8-10 years. Noritz units can last up to 2 times longer and are drastically smaller than a storage tank. The main components of Noritz tankless water heaters are recyclable and every part is replaceable. Therefore, Noritz significantly reduces the amount of waste material that ends up in landfills every year.

NEW CONDENSING HEATERS

- PVC Venting**
 - Zero clearance to combustible
 - 3" or 4" PVC
- Stainless Steel Heat Exchanger**
 - Residual heat used to pre-heat incoming water
 - Durable & high strength
 - Corrosion resistant
- Copper Heat Exchanger**
 - Commercial grade copper
 - 25% thicker piping
 - Unique efficient heat distribution design
- Temperature Settings from 100°F-180°F**
- Neutralizer Included**

CONDENSING TECHNOLOGY 93.3% Efficient

NORITZ RESIDENTIAL 841 series		841 SERIES MODELS Specification Chart	
Flow Rates* Summer/ Water Supply 70°F 4.1 Showers Winter/ Water Supply 45°F 2.5 Showers	Specification	N-0841MC (Stainless Steel) Max: 199,900 btuh Min: 11,000 btuh ▶ Turbo Flow Up to 11.1 GPM ▶ Quick-Connect ▶ Multi-system (up to 24 units) ▶ 3" or 4" PVC or stainless venting	N-0841MC-DV (Stainless Steel) Max: 199,900 btuh Min: 11,000 btuh ▶ Turbo Flow Up to 11.1 GPM ▶ Quick-Connect ▶ Multi-system (up to 24 units) ▶ 3" or 4" PVC or stainless venting
	Item	NG/ Efficiency Max. 199,900 btuh- Min. 11,000 btuh/ 93.3%	Max. 199,900 btuh- Min. 11,000 btuh/ 93.3%
	Gas Consumption LP/ Efficiency Max. 199,900 btuh- Min. 11,000 btuh/ 93.4%	Max. 199,900 btuh- Min. 11,000 btuh/ 93.4%	Max. 199,900 btuh- Min. 11,000 btuh/ 93.4%
	Capacity Range 0.5-11.1 Gal./min.	0.5-11.1 Gal./min.	0.5-11.1 Gal./min.
	Dimensions 24.2"(Height) x 18.3"(Width) x 9.4"(Depth)	24.2"(Height) x 18.3"(Width) x 9.4"(Depth)	24.2"(Height) x 18.3"(Width) x 9.4"(Depth)
	Included Accessories Remote Controller, Remote Controller Cord, Anchoring Screws, Condensate Neutralizer	Remote Controller, Remote Controller Cord, Anchoring Screws, Condensate Neutralizer	Remote Controller, Remote Controller Cord, Anchoring Screws, Condensate Neutralizer
	MSRP \$2,399.00	\$2,399.00	\$2,399.00

NORITZ RESIDENTIAL | 531 series

Our 531 Series is perfect for apartments, condominiums and townhouses. When properly sized, they provide an endless supply of hot water and are designed to be more efficient than traditional tank-type water heaters. These compact heaters will save space without compromising power.

531 SERIES MODELS Specification Chart																						
Flow Rates* Summer/ Water Supply 70°F 2.6 Showers Winter/ Water Supply 45°F 1.5 Showers	<table border="0"> <tr> <td>Specification</td> <td>N-0531S Indoor/ Outdoor N-0531S Max: 140,000 btuh Min: 20,000 btuh ▶ Turbo Flow Up to 6.6 GPM ▶ 3" Venting</td> <td>N-0531S-OD Outdoor N-0531S-OD Max: 140,000 btuh Min: 20,000 btuh ▶ Turbo Flow Up to 6.6 GPM ▶ Built-in Venting</td> </tr> <tr> <td>Item</td> <td>Max. 140,000 btuh- Min. 20,000 btuh/ 83%</td> <td>Max. 140,000 btuh- Min. 20,000 btuh/ 83%</td> </tr> <tr> <td>Gas Consumption LP/ Efficiency</td> <td>Max. 140,000 btuh- Min. 20,000 btuh/ 83%</td> <td>Max. 140,000 btuh- Min. 20,000 btuh/ 83%</td> </tr> <tr> <td>Capacity Range</td> <td>0.5-6.6 Gal./min.</td> <td>0.5-6.6 Gal./min.</td> </tr> <tr> <td>Dimensions</td> <td>20.5" (Height) x 13.8" (Width) x 6.7" (Depth)</td> <td>20.5" (Height) x 13.8" (Width) x 6.7" (Depth)</td> </tr> <tr> <td>Included Accessories</td> <td>Anchoring Screws</td> <td>Anchoring Screws</td> </tr> <tr> <td>MSRP</td> <td>\$829.00 US</td> <td>\$829.00 US</td> </tr> </table>	Specification	N-0531S Indoor/ Outdoor N-0531S Max: 140,000 btuh Min: 20,000 btuh ▶ Turbo Flow Up to 6.6 GPM ▶ 3" Venting	N-0531S-OD Outdoor N-0531S-OD Max: 140,000 btuh Min: 20,000 btuh ▶ Turbo Flow Up to 6.6 GPM ▶ Built-in Venting	Item	Max. 140,000 btuh- Min. 20,000 btuh/ 83%	Max. 140,000 btuh- Min. 20,000 btuh/ 83%	Gas Consumption LP/ Efficiency	Max. 140,000 btuh- Min. 20,000 btuh/ 83%	Max. 140,000 btuh- Min. 20,000 btuh/ 83%	Capacity Range	0.5-6.6 Gal./min.	0.5-6.6 Gal./min.	Dimensions	20.5" (Height) x 13.8" (Width) x 6.7" (Depth)	20.5" (Height) x 13.8" (Width) x 6.7" (Depth)	Included Accessories	Anchoring Screws	Anchoring Screws	MSRP	\$829.00 US	\$829.00 US
	Specification	N-0531S Indoor/ Outdoor N-0531S Max: 140,000 btuh Min: 20,000 btuh ▶ Turbo Flow Up to 6.6 GPM ▶ 3" Venting	N-0531S-OD Outdoor N-0531S-OD Max: 140,000 btuh Min: 20,000 btuh ▶ Turbo Flow Up to 6.6 GPM ▶ Built-in Venting																			
Item	Max. 140,000 btuh- Min. 20,000 btuh/ 83%	Max. 140,000 btuh- Min. 20,000 btuh/ 83%																				
Gas Consumption LP/ Efficiency	Max. 140,000 btuh- Min. 20,000 btuh/ 83%	Max. 140,000 btuh- Min. 20,000 btuh/ 83%																				
Capacity Range	0.5-6.6 Gal./min.	0.5-6.6 Gal./min.																				
Dimensions	20.5" (Height) x 13.8" (Width) x 6.7" (Depth)	20.5" (Height) x 13.8" (Width) x 6.7" (Depth)																				
Included Accessories	Anchoring Screws	Anchoring Screws																				
MSRP	\$829.00 US	\$829.00 US																				

NORITZ RESIDENTIAL | 751 series

With more power than any other tankless water heater in its class, the 751 Series is ideal for mid-sized homes. These units offer several innovations, such as a dual flame burner, redesigned heat exchanger, Quick-Connect and the Turbo-Flow feature which can boost its output to 9.8 gallons per minute. In addition, the piping is 25% thicker than our competitor's to accommodate the higher flow rate demand.

751 SERIES MODELS Specification Chart																													
Flow Rates* Summer/ Water Supply 70°F 3.9 Showers Winter/ Water Supply 45°F 2.2 Showers	<table border="0"> <tr> <td>Specification</td> <td>N-0751M Indoor/ Outdoor N-0751M Max: 199,900 btuh Min: 12,000 btuh ▶ Turbo Flow Up to 9.8 GPM ▶ Quick-Connect ▶ 4" Venting</td> <td>N-0751M-DV Indoor Direct Vent N-0751M-DV Max: 199,900 btuh Min: 12,000 btuh ▶ Turbo Flow Up to 9.8 GPM ▶ Quick-Connect ▶ 4" Venting</td> <td>N-0751M-OD Outdoor N-0751M-OD Max: 199,900 btuh Min: 12,000 btuh ▶ Turbo Flow Up to 9.8 GPM ▶ Quick-Connect ▶ Built-in Venting</td> </tr> <tr> <td>Item</td> <td>Max. 199,900 btuh- Min. 12,000 btuh/ 84%</td> <td>Max. 199,900 btuh- Min. 12,000 btuh/ 84%</td> <td>Max. 199,900 btuh- Min. 12,000 btuh/ 84%</td> </tr> <tr> <td>Gas Consumption LP/ Efficiency</td> <td>Max. 199,900 btuh- Min. 12,000 btuh/ 84%</td> <td>Max. 199,900 btuh- Min. 12,000 btuh/ 84%</td> <td>Max. 199,900 btuh- Min. 12,000 btuh/ 84%</td> </tr> <tr> <td>Capacity Range</td> <td>0.5-9.8 Gal./min.</td> <td>0.5-9.8 Gal./min.</td> <td>0.5-9.8 Gal./min.</td> </tr> <tr> <td>Dimensions</td> <td>23.6" (Height) x 13.8" (Width) x 9.4" (Depth)</td> <td>24.2" (Height) x 18.3" (Width) x 9.4" (Depth)</td> <td>23.6" (Height) x 13.8" (Width) x 9.4" (Depth)</td> </tr> <tr> <td>Included Accessories</td> <td>Anchoring Screws</td> <td>Remote Controller, Remote Controller Cord, Anchoring Screws</td> <td>Anchoring Screws</td> </tr> <tr> <td>MSRP</td> <td>\$1,299.00 US</td> <td>\$1,299.00 US</td> <td>\$1,299.00 US</td> </tr> </table>	Specification	N-0751M Indoor/ Outdoor N-0751M Max: 199,900 btuh Min: 12,000 btuh ▶ Turbo Flow Up to 9.8 GPM ▶ Quick-Connect ▶ 4" Venting	N-0751M-DV Indoor Direct Vent N-0751M-DV Max: 199,900 btuh Min: 12,000 btuh ▶ Turbo Flow Up to 9.8 GPM ▶ Quick-Connect ▶ 4" Venting	N-0751M-OD Outdoor N-0751M-OD Max: 199,900 btuh Min: 12,000 btuh ▶ Turbo Flow Up to 9.8 GPM ▶ Quick-Connect ▶ Built-in Venting	Item	Max. 199,900 btuh- Min. 12,000 btuh/ 84%	Max. 199,900 btuh- Min. 12,000 btuh/ 84%	Max. 199,900 btuh- Min. 12,000 btuh/ 84%	Gas Consumption LP/ Efficiency	Max. 199,900 btuh- Min. 12,000 btuh/ 84%	Max. 199,900 btuh- Min. 12,000 btuh/ 84%	Max. 199,900 btuh- Min. 12,000 btuh/ 84%	Capacity Range	0.5-9.8 Gal./min.	0.5-9.8 Gal./min.	0.5-9.8 Gal./min.	Dimensions	23.6" (Height) x 13.8" (Width) x 9.4" (Depth)	24.2" (Height) x 18.3" (Width) x 9.4" (Depth)	23.6" (Height) x 13.8" (Width) x 9.4" (Depth)	Included Accessories	Anchoring Screws	Remote Controller, Remote Controller Cord, Anchoring Screws	Anchoring Screws	MSRP	\$1,299.00 US	\$1,299.00 US	\$1,299.00 US
	Specification	N-0751M Indoor/ Outdoor N-0751M Max: 199,900 btuh Min: 12,000 btuh ▶ Turbo Flow Up to 9.8 GPM ▶ Quick-Connect ▶ 4" Venting	N-0751M-DV Indoor Direct Vent N-0751M-DV Max: 199,900 btuh Min: 12,000 btuh ▶ Turbo Flow Up to 9.8 GPM ▶ Quick-Connect ▶ 4" Venting	N-0751M-OD Outdoor N-0751M-OD Max: 199,900 btuh Min: 12,000 btuh ▶ Turbo Flow Up to 9.8 GPM ▶ Quick-Connect ▶ Built-in Venting																									
Item	Max. 199,900 btuh- Min. 12,000 btuh/ 84%	Max. 199,900 btuh- Min. 12,000 btuh/ 84%	Max. 199,900 btuh- Min. 12,000 btuh/ 84%																										
Gas Consumption LP/ Efficiency	Max. 199,900 btuh- Min. 12,000 btuh/ 84%	Max. 199,900 btuh- Min. 12,000 btuh/ 84%	Max. 199,900 btuh- Min. 12,000 btuh/ 84%																										
Capacity Range	0.5-9.8 Gal./min.	0.5-9.8 Gal./min.	0.5-9.8 Gal./min.																										
Dimensions	23.6" (Height) x 13.8" (Width) x 9.4" (Depth)	24.2" (Height) x 18.3" (Width) x 9.4" (Depth)	23.6" (Height) x 13.8" (Width) x 9.4" (Depth)																										
Included Accessories	Anchoring Screws	Remote Controller, Remote Controller Cord, Anchoring Screws	Anchoring Screws																										
MSRP	\$1,299.00 US	\$1,299.00 US	\$1,299.00 US																										

NH series HYDRONIC BOILERS

The NH Series can provide quiet and constant heat to your home by providing hot water to panel radiators, baseboard and radiant flooring and forced hydro-air systems.

<p>Noritz NH Series Fully Modulating 140 - 180°F 140-180°F (180°F Option) Heating System Control ▶ Remote Control & Cord, Term. Control 24.2" x 18.3" x 9.4" (70% Smaller) 65.3 lbs. (80% Lighter)</p>	<p>Conventional Boilers Non-Modulating 180°F 180°F Mechanical Relay ▶ Hardwired, 60 Hz, Term. Control 31" x 19" x 23.2" 325 lbs.</p>
---	---

NH SERIES MODELS Specification Chart																									
Flow Rates* Summer/ Water Supply 70°F 3.9 Showers Winter/ Water Supply 45°F 2.2 Showers	<table border="0"> <tr> <td>Specification</td> <td>NH-1501-DV Max: 150,000 btuh Min: 55,500 btuh ▶ Indoor Direct Vent ▶ 4" Venting</td> <td>NH-2001-DV Max: 199,900 btuh Min: 55,500 btuh ▶ Indoor Direct Vent ▶ 4" Venting</td> </tr> <tr> <td>Item</td> <td>Max. 150,000 btuh- Min. 55,500 btuh/ 83%</td> <td>Max. 199,900 btuh- Min. 55,500 btuh/ 82.7%</td> </tr> <tr> <td>Gas Consumption LP/ AFUE</td> <td>Max. 150,000 btuh- Min. 55,500 btuh/ 82.8%</td> <td>Max. 199,900 btuh- Min. 55,500 btuh/ 83%</td> </tr> <tr> <td>Capacity Range</td> <td>0.5-11.1 Gal./min.</td> <td>0.5-11.1 Gal./min.</td> </tr> <tr> <td>Dimensions</td> <td>24.2" (Height) x 18.3" (Width) x 9.4" (Depth)</td> <td>24.2" (Height) x 18.3" (Width) x 9.4" (Depth)</td> </tr> <tr> <td>Weight</td> <td>65.3 lbs.</td> <td>65.3 lbs.</td> </tr> <tr> <td>Included Accessories</td> <td>Pressure & Temperature Gauge, Safety Relief Valve, Anchoring Screws, Terminals</td> <td>Pressure & Temperature Gauge, Safety Relief Valve, Anchoring Screws, Terminals</td> </tr> <tr> <td>MSRP</td> <td>\$2,299.00 US</td> <td>\$2,799.00 US</td> </tr> </table>	Specification	NH-1501-DV Max: 150,000 btuh Min: 55,500 btuh ▶ Indoor Direct Vent ▶ 4" Venting	NH-2001-DV Max: 199,900 btuh Min: 55,500 btuh ▶ Indoor Direct Vent ▶ 4" Venting	Item	Max. 150,000 btuh- Min. 55,500 btuh/ 83%	Max. 199,900 btuh- Min. 55,500 btuh/ 82.7%	Gas Consumption LP/ AFUE	Max. 150,000 btuh- Min. 55,500 btuh/ 82.8%	Max. 199,900 btuh- Min. 55,500 btuh/ 83%	Capacity Range	0.5-11.1 Gal./min.	0.5-11.1 Gal./min.	Dimensions	24.2" (Height) x 18.3" (Width) x 9.4" (Depth)	24.2" (Height) x 18.3" (Width) x 9.4" (Depth)	Weight	65.3 lbs.	65.3 lbs.	Included Accessories	Pressure & Temperature Gauge, Safety Relief Valve, Anchoring Screws, Terminals	Pressure & Temperature Gauge, Safety Relief Valve, Anchoring Screws, Terminals	MSRP	\$2,299.00 US	\$2,799.00 US
	Specification	NH-1501-DV Max: 150,000 btuh Min: 55,500 btuh ▶ Indoor Direct Vent ▶ 4" Venting	NH-2001-DV Max: 199,900 btuh Min: 55,500 btuh ▶ Indoor Direct Vent ▶ 4" Venting																						
Item	Max. 150,000 btuh- Min. 55,500 btuh/ 83%	Max. 199,900 btuh- Min. 55,500 btuh/ 82.7%																							
Gas Consumption LP/ AFUE	Max. 150,000 btuh- Min. 55,500 btuh/ 82.8%	Max. 199,900 btuh- Min. 55,500 btuh/ 83%																							
Capacity Range	0.5-11.1 Gal./min.	0.5-11.1 Gal./min.																							
Dimensions	24.2" (Height) x 18.3" (Width) x 9.4" (Depth)	24.2" (Height) x 18.3" (Width) x 9.4" (Depth)																							
Weight	65.3 lbs.	65.3 lbs.																							
Included Accessories	Pressure & Temperature Gauge, Safety Relief Valve, Anchoring Screws, Terminals	Pressure & Temperature Gauge, Safety Relief Valve, Anchoring Screws, Terminals																							
MSRP	\$2,299.00 US	\$2,799.00 US																							

NORITZ RESIDENTIAL | 631 series

Our 631 Series is designed for smaller-sized homes. When properly sized, they provide an endless supply of hot water to an entire home. With state-of-the-art gas combustion technology, Noritz burners maximize output and provide temperature stability while maintaining low emissions.

631 SERIES MODELS Specification Chart																						
Flow Rates* Summer/ Water Supply 70°F 2.8 Showers Winter/ Water Supply 45°F 1.9 Showers	<table border="0"> <tr> <td>Specification</td> <td>N-0631S Indoor/ Outdoor N-0631S Max: 180,000 btuh Min: 25,000 btuh ▶ Turbo Flow Up to 7.1 GPM ▶ 4" Venting</td> <td>N-0631S-OD Outdoor N-0631S-OD Max: 180,000 btuh Min: 25,000 btuh ▶ Turbo Flow Up to 7.1 GPM ▶ Built-in Venting</td> </tr> <tr> <td>Item</td> <td>Max. 180,000 btuh- Min. 25,000 btuh/ 83%</td> <td>Max. 180,000 btuh- Min. 25,000 btuh/ 83%</td> </tr> <tr> <td>Gas Consumption LP/ Efficiency</td> <td>Max. 180,000 btuh- Min. 25,000 btuh/ 83%</td> <td>Max. 180,000 btuh- Min. 25,000 btuh/ 83%</td> </tr> <tr> <td>Capacity Range</td> <td>0.5-7.1 Gal./min.</td> <td>0.5-7.1 Gal./min.</td> </tr> <tr> <td>Dimensions</td> <td>23.6" (Height) x 13.8" (Width) x 6.7" (Depth)</td> <td>23.6" (Height) x 13.8" (Width) x 6.7" (Depth)</td> </tr> <tr> <td>Included Accessories</td> <td>Anchoring Screws</td> <td>Anchoring Screws</td> </tr> <tr> <td>MSRP</td> <td>\$1,029.00 US</td> <td>\$1,029.00 US</td> </tr> </table>	Specification	N-0631S Indoor/ Outdoor N-0631S Max: 180,000 btuh Min: 25,000 btuh ▶ Turbo Flow Up to 7.1 GPM ▶ 4" Venting	N-0631S-OD Outdoor N-0631S-OD Max: 180,000 btuh Min: 25,000 btuh ▶ Turbo Flow Up to 7.1 GPM ▶ Built-in Venting	Item	Max. 180,000 btuh- Min. 25,000 btuh/ 83%	Max. 180,000 btuh- Min. 25,000 btuh/ 83%	Gas Consumption LP/ Efficiency	Max. 180,000 btuh- Min. 25,000 btuh/ 83%	Max. 180,000 btuh- Min. 25,000 btuh/ 83%	Capacity Range	0.5-7.1 Gal./min.	0.5-7.1 Gal./min.	Dimensions	23.6" (Height) x 13.8" (Width) x 6.7" (Depth)	23.6" (Height) x 13.8" (Width) x 6.7" (Depth)	Included Accessories	Anchoring Screws	Anchoring Screws	MSRP	\$1,029.00 US	\$1,029.00 US
	Specification	N-0631S Indoor/ Outdoor N-0631S Max: 180,000 btuh Min: 25,000 btuh ▶ Turbo Flow Up to 7.1 GPM ▶ 4" Venting	N-0631S-OD Outdoor N-0631S-OD Max: 180,000 btuh Min: 25,000 btuh ▶ Turbo Flow Up to 7.1 GPM ▶ Built-in Venting																			
Item	Max. 180,000 btuh- Min. 25,000 btuh/ 83%	Max. 180,000 btuh- Min. 25,000 btuh/ 83%																				
Gas Consumption LP/ Efficiency	Max. 180,000 btuh- Min. 25,000 btuh/ 83%	Max. 180,000 btuh- Min. 25,000 btuh/ 83%																				
Capacity Range	0.5-7.1 Gal./min.	0.5-7.1 Gal./min.																				
Dimensions	23.6" (Height) x 13.8" (Width) x 6.7" (Depth)	23.6" (Height) x 13.8" (Width) x 6.7" (Depth)																				
Included Accessories	Anchoring Screws	Anchoring Screws																				
MSRP	\$1,029.00 US	\$1,029.00 US																				

NORITZ RESIDENTIAL | 931 series

For our luxury line, we have the 931 Series. This unit features the Quick-Connect system which links two units together to meet the high demand of today's luxury homes. To accommodate the higher flow rate demand, these units have a dual flame burner, redesigned heat exchanger and 25% thicker piping. No other tankless water heater in its class can beat its performance, dependability and quality.

931 SERIES MODELS Specification Chart																													
Flow Rates* Summer/ Water Supply 70°F 4.4 Showers Winter/ Water Supply 45°F 2.8 Showers	<table border="0"> <tr> <td>Specification</td> <td>N-0931M Indoor/ Outdoor N-0931M Max: 250,000 btuh Min: 11,000 btuh ▶ Turbo Flow Up to 11.1 GPM ▶ Quick-Connect ▶ 4" Venting</td> <td>N-0931M-DV Indoor Direct Vent N-0931M-DV Max: 250,000 btuh Min: 11,000 btuh ▶ Turbo Flow Up to 11.1 GPM ▶ Quick-Connect ▶ 4" Venting</td> <td>N-0931M-OD Outdoor N-0931M-OD Max: 250,000 btuh Min: 11,000 btuh ▶ Turbo Flow Up to 11.1 GPM ▶ Quick-Connect ▶ Built-in Venting</td> </tr> <tr> <td>Item</td> <td>Max. 250,000 btuh- Min. 11,000 btuh/ 84%</td> <td>Max. 250,000 btuh- Min. 11,000 btuh/ 84%</td> <td>Max. 250,000 btuh- Min. 11,000 btuh/ 84%</td> </tr> <tr> <td>Gas Consumption LP/ Efficiency</td> <td>Max. 250,000 btuh- Min. 11,000 btuh/ 84%</td> <td>Max. 250,000 btuh- Min. 11,000 btuh/ 84%</td> <td>Max. 250,000 btuh- Min. 11,000 btuh/ 84%</td> </tr> <tr> <td>Capacity Range</td> <td>0.5-11.1 Gal./min.</td> <td>0.5-11.1 Gal./min.</td> <td>0.5-11.1 Gal./min.</td> </tr> <tr> <td>Dimensions</td> <td>24.2" (Height) x 18.3" (Width) x 9.4" (Depth)</td> <td>24.2" (Height) x 18.3" (Width) x 9.4" (Depth)</td> <td>24.2" (Height) x 18.3" (Width) x 9.4" (Depth)</td> </tr> <tr> <td>Included Accessories</td> <td>Anchoring Screws</td> <td>Remote Controller, Remote Controller Cord, Anchoring Screws</td> <td>Anchoring Screws</td> </tr> <tr> <td>MSRP</td> <td>\$2,099.00 US</td> <td>\$2,099.00 US</td> <td>\$2,099.00 US</td> </tr> </table>	Specification	N-0931M Indoor/ Outdoor N-0931M Max: 250,000 btuh Min: 11,000 btuh ▶ Turbo Flow Up to 11.1 GPM ▶ Quick-Connect ▶ 4" Venting	N-0931M-DV Indoor Direct Vent N-0931M-DV Max: 250,000 btuh Min: 11,000 btuh ▶ Turbo Flow Up to 11.1 GPM ▶ Quick-Connect ▶ 4" Venting	N-0931M-OD Outdoor N-0931M-OD Max: 250,000 btuh Min: 11,000 btuh ▶ Turbo Flow Up to 11.1 GPM ▶ Quick-Connect ▶ Built-in Venting	Item	Max. 250,000 btuh- Min. 11,000 btuh/ 84%	Max. 250,000 btuh- Min. 11,000 btuh/ 84%	Max. 250,000 btuh- Min. 11,000 btuh/ 84%	Gas Consumption LP/ Efficiency	Max. 250,000 btuh- Min. 11,000 btuh/ 84%	Max. 250,000 btuh- Min. 11,000 btuh/ 84%	Max. 250,000 btuh- Min. 11,000 btuh/ 84%	Capacity Range	0.5-11.1 Gal./min.	0.5-11.1 Gal./min.	0.5-11.1 Gal./min.	Dimensions	24.2" (Height) x 18.3" (Width) x 9.4" (Depth)	24.2" (Height) x 18.3" (Width) x 9.4" (Depth)	24.2" (Height) x 18.3" (Width) x 9.4" (Depth)	Included Accessories	Anchoring Screws	Remote Controller, Remote Controller Cord, Anchoring Screws	Anchoring Screws	MSRP	\$2,099.00 US	\$2,099.00 US	\$2,099.00 US
	Specification	N-0931M Indoor/ Outdoor N-0931M Max: 250,000 btuh Min: 11,000 btuh ▶ Turbo Flow Up to 11.1 GPM ▶ Quick-Connect ▶ 4" Venting	N-0931M-DV Indoor Direct Vent N-0931M-DV Max: 250,000 btuh Min: 11,000 btuh ▶ Turbo Flow Up to 11.1 GPM ▶ Quick-Connect ▶ 4" Venting	N-0931M-OD Outdoor N-0931M-OD Max: 250,000 btuh Min: 11,000 btuh ▶ Turbo Flow Up to 11.1 GPM ▶ Quick-Connect ▶ Built-in Venting																									
Item	Max. 250,000 btuh- Min. 11,000 btuh/ 84%	Max. 250,000 btuh- Min. 11,000 btuh/ 84%	Max. 250,000 btuh- Min. 11,000 btuh/ 84%																										
Gas Consumption LP/ Efficiency	Max. 250,000 btuh- Min. 11,000 btuh/ 84%	Max. 250,000 btuh- Min. 11,000 btuh/ 84%	Max. 250,000 btuh- Min. 11,000 btuh/ 84%																										
Capacity Range	0.5-11.1 Gal./min.	0.5-11.1 Gal./min.	0.5-11.1 Gal./min.																										
Dimensions	24.2" (Height) x 18.3" (Width) x 9.4" (Depth)	24.2" (Height) x 18.3" (Width) x 9.4" (Depth)	24.2" (Height) x 18.3" (Width) x 9.4" (Depth)																										
Included Accessories	Anchoring Screws	Remote Controller, Remote Controller Cord, Anchoring Screws	Anchoring Screws																										
MSRP	\$2,099.00 US	\$2,099.00 US	\$2,099.00 US																										

NORITZ COMMERCIAL | 931 & 1321 series ASME Certified

For the first time Noritz is offering true commercial grade components and materials inside and out. A state-of-the-art heat exchanger boosts the heater's power while lowering minimum flow requirements. To help ensure the longevity of its performance, we have enclosed the heater's components with a corrosion-free stainless steel exterior casing, giving the look and feel of other professional grade equipment.

931 SERIES MODELS Specification Chart		1321 SERIES MODEL Specification Chart																												
Flow Rates* Summer/ Water Supply 70°F 4.4 Showers Winter/ Water Supply 45°F 2.8 Showers	<table border="0"> <tr> <td>Specification</td> <td>N-0931M-ASME Indoor/ Outdoor - FEATURING NEW INDUSTRY FIRST COMMERCIAL STAINLESS STEEL Max: 250,000 btuh Min: 11,000 btuh ▶ Turbo Flow Up to 11.1 GPM ▶ Quick-Connect ▶ Multi-System ▶ 4" Venting</td> <td>N-0931M-DV-ASME Indoor Direct Vent - FEATURING NEW INDUSTRY FIRST COMMERCIAL STAINLESS STEEL Max: 250,000 btuh Min: 11,000 btuh ▶ Turbo Flow Up to 11.1 GPM ▶ Quick-Connect ▶ Multi-System ▶ 4" Venting</td> <td>N-1321M-ASME Indoor/ Outdoor - FEATURING NEW INDUSTRY FIRST COMMERCIAL STAINLESS STEEL Max: 380,000 btuh Min: 22,500 btuh ▶ Turbo Flow Up to 13.2 Gal./min. ▶ Quick-Connect ▶ Multi-System ▶ 5" Venting</td> </tr> <tr> <td>Item</td> <td>Max. 250,000 btuh- Min. 11,000 btuh/ 84%</td> <td>Max. 250,000 btuh- Min. 11,000 btuh/ 84%</td> <td>Max. 380,000 btuh- Min. 22,500 btuh/ 80%</td> </tr> <tr> <td>Gas Consumption LP/ Efficiency</td> <td>Max. 250,000 btuh- Min. 11,000 btuh/ 84%</td> <td>Max. 250,000 btuh- Min. 11,000 btuh/ 84%</td> <td>Max. 380,000 btuh- Min. 22,500 btuh/ 84%</td> </tr> <tr> <td>Capacity Range</td> <td>0.5-11.1 Gal./min.</td> <td>0.5-11.1 Gal./min.</td> <td>0.7-13.2 Gal./min.</td> </tr> <tr> <td>Dimensions</td> <td>24.4" (Height) x 18.4" (Width) x 9.4" (Depth)</td> <td>24.4" (Height) x 18.4" (Width) x 9.4" (Depth)</td> <td>29.5" (Height) x 19.1" (Width) x 11.8" (Depth)</td> </tr> <tr> <td>Included Accessories</td> <td>Remote Controller, Remote Controller Cord, Anchoring Screws</td> <td>Remote Controller, Remote Controller Cord, Anchoring Screws</td> <td>Remote Controller, Remote Controller Cord, Anchoring Screws</td> </tr> <tr> <td>MSRP</td> <td>\$2,399.00 US</td> <td>\$2,429.00 US</td> <td>\$4,599.00 US</td> </tr> </table>	Specification	N-0931M-ASME Indoor/ Outdoor - FEATURING NEW INDUSTRY FIRST COMMERCIAL STAINLESS STEEL Max: 250,000 btuh Min: 11,000 btuh ▶ Turbo Flow Up to 11.1 GPM ▶ Quick-Connect ▶ Multi-System ▶ 4" Venting	N-0931M-DV-ASME Indoor Direct Vent - FEATURING NEW INDUSTRY FIRST COMMERCIAL STAINLESS STEEL Max: 250,000 btuh Min: 11,000 btuh ▶ Turbo Flow Up to 11.1 GPM ▶ Quick-Connect ▶ Multi-System ▶ 4" Venting	N-1321M-ASME Indoor/ Outdoor - FEATURING NEW INDUSTRY FIRST COMMERCIAL STAINLESS STEEL Max: 380,000 btuh Min: 22,500 btuh ▶ Turbo Flow Up to 13.2 Gal./min. ▶ Quick-Connect ▶ Multi-System ▶ 5" Venting	Item	Max. 250,000 btuh- Min. 11,000 btuh/ 84%	Max. 250,000 btuh- Min. 11,000 btuh/ 84%	Max. 380,000 btuh- Min. 22,500 btuh/ 80%	Gas Consumption LP/ Efficiency	Max. 250,000 btuh- Min. 11,000 btuh/ 84%	Max. 250,000 btuh- Min. 11,000 btuh/ 84%	Max. 380,000 btuh- Min. 22,500 btuh/ 84%	Capacity Range	0.5-11.1 Gal./min.	0.5-11.1 Gal./min.	0.7-13.2 Gal./min.	Dimensions	24.4" (Height) x 18.4" (Width) x 9.4" (Depth)	24.4" (Height) x 18.4" (Width) x 9.4" (Depth)	29.5" (Height) x 19.1" (Width) x 11.8" (Depth)	Included Accessories	Remote Controller, Remote Controller Cord, Anchoring Screws	Remote Controller, Remote Controller Cord, Anchoring Screws	Remote Controller, Remote Controller Cord, Anchoring Screws	MSRP	\$2,399.00 US	\$2,429.00 US	\$4,599.00 US	
	Specification	N-0931M-ASME Indoor/ Outdoor - FEATURING NEW INDUSTRY FIRST COMMERCIAL STAINLESS STEEL Max: 250,000 btuh Min: 11,000 btuh ▶ Turbo Flow Up to 11.1 GPM ▶ Quick-Connect ▶ Multi-System ▶ 4" Venting	N-0931M-DV-ASME Indoor Direct Vent - FEATURING NEW INDUSTRY FIRST COMMERCIAL STAINLESS STEEL Max: 250,000 btuh Min: 11,000 btuh ▶ Turbo Flow Up to 11.1 GPM ▶ Quick-Connect ▶ Multi-System ▶ 4" Venting	N-1321M-ASME Indoor/ Outdoor - FEATURING NEW INDUSTRY FIRST COMMERCIAL STAINLESS STEEL Max: 380,000 btuh Min: 22,500 btuh ▶ Turbo Flow Up to 13.2 Gal./min. ▶ Quick-Connect ▶ Multi-System ▶ 5" Venting																										
Item	Max. 250,000 btuh- Min. 11,000 btuh/ 84%	Max. 250,000 btuh- Min. 11,000 btuh/ 84%	Max. 380,000 btuh- Min. 22,500 btuh/ 80%																											
Gas Consumption LP/ Efficiency	Max. 250,000 btuh- Min. 11,000 btuh/ 84%	Max. 250,000 btuh- Min. 11,000 btuh/ 84%	Max. 380,000 btuh- Min. 22,500 btuh/ 84%																											
Capacity Range	0.5-11.1 Gal./min.	0.5-11.1 Gal./min.	0.7-13.2 Gal./min.																											
Dimensions	24.4" (Height) x 18.4" (Width) x 9.4" (Depth)	24.4" (Height) x 18.4" (Width) x 9.4" (Depth)	29.5" (Height) x 19.1" (Width) x 11.8" (Depth)																											
Included Accessories	Remote Controller, Remote Controller Cord, Anchoring Screws	Remote Controller, Remote Controller Cord, Anchoring Screws	Remote Controller, Remote Controller Cord, Anchoring Screws																											
MSRP	\$2,399.00 US	\$2,429.00 US	\$4,599.00 US																											

*Assuming a standard 2.5 GPM showerhead and 105°F output water temperatures.

THE BEST QUALITY IN TANKLESS TECHNOLOGY IS NORITZ AMERICA



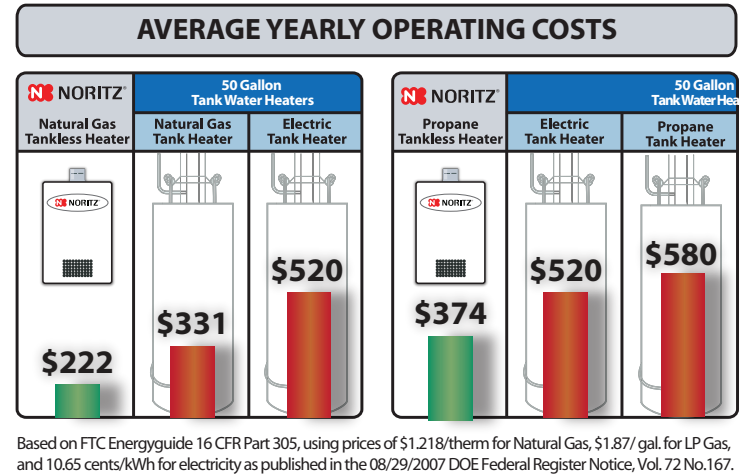
ENDLESS HOT WATER

A tankless water heater heats water on demand, so that means no storage or shortage of hot water. Imagine the luxury of always having hot showers or filling up a Jacuzzi hot tub and still having an endless supply of hot water for the rest of your household needs.



ENERGY SAVINGS

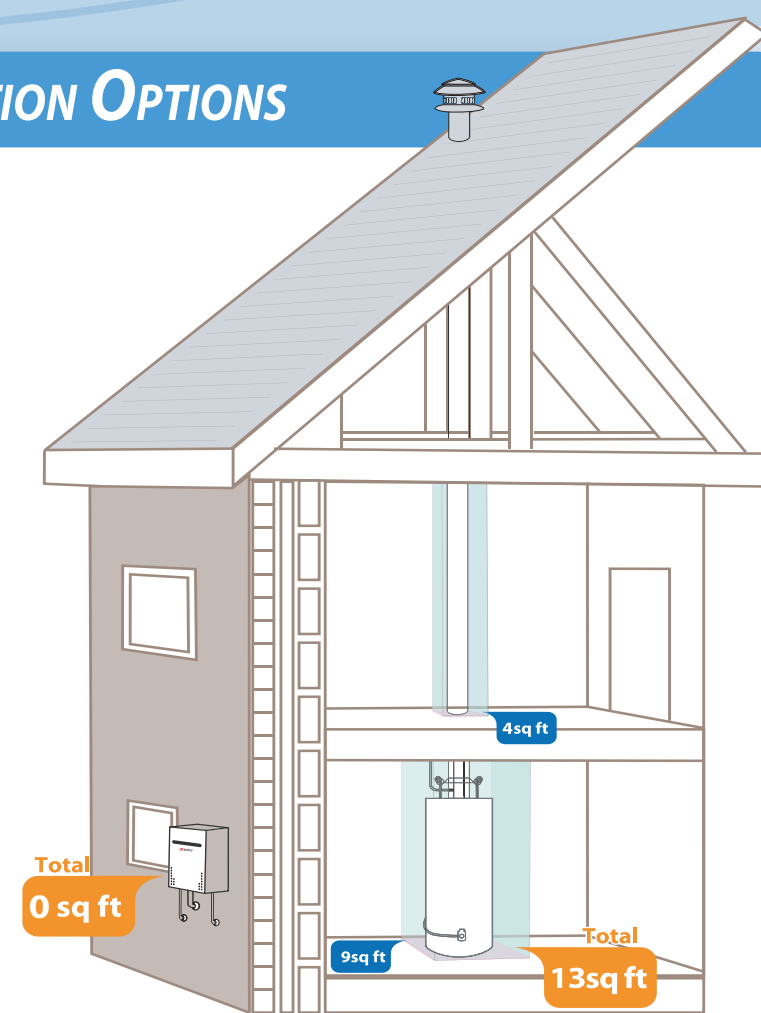
According to the U.S. Department of Energy (DOE) tankless water heaters are expected to achieve a 30 percent reduction in energy use and save a consumer approximately \$108 in annual energy costs compared to a typical gas storage water heater.



FLEXIBLE INSTALLATION OPTIONS

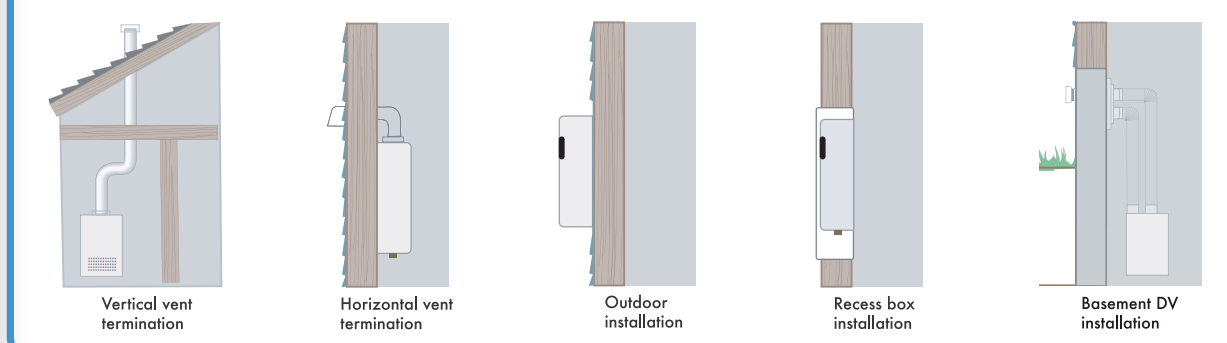
SPACE SAVING CALCULATION

A traditional tank-type water heater takes up to 13 square feet of space. If 1 square foot is worth \$200, that's \$2,600 (13 square feet x \$200) worth of space you could be saving with a Noritz.



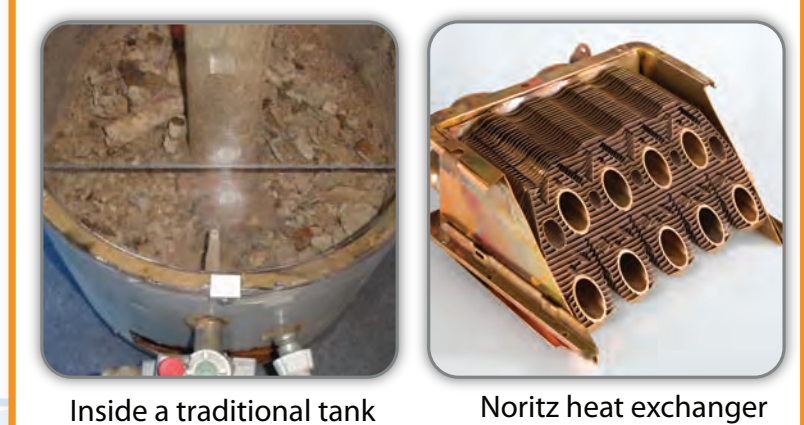
TYPES OF INSTALLATION

Compact in design, Noritz tankless water heaters can be installed virtually anywhere. Compared to traditional water heaters, one of the most obvious differences is its small size. Indoor or outdoor models are available. This frees up the space formally taken by a bulky tank.



CLEAN WATER

As years pass, traditional tank-type water heaters start to rust and build up scale inside the tank, which is where your hot water is being stored for use. A Noritz heats water as it passes through the unit, so you will never have to use hot water that has been stored in an old rusty tank.



Inside a traditional tank Noritz heat exchanger

HIGHER VOLUME

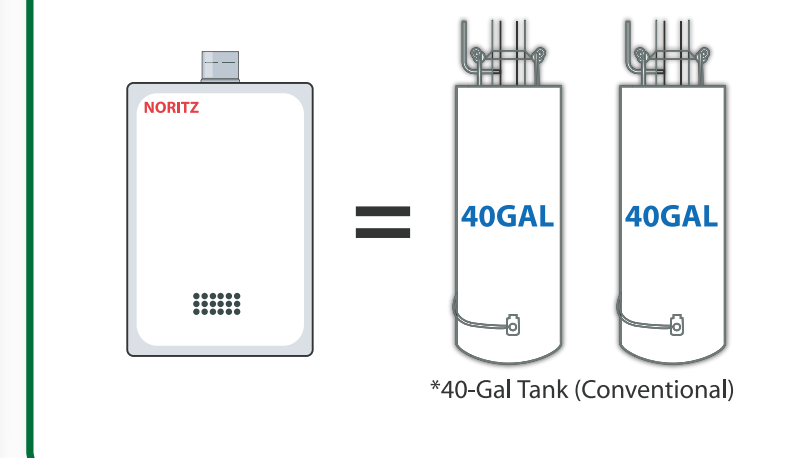
Properly sized Noritz tankless water heaters are capable of supplying more hot water than traditional tank-type water heaters.

Quick-Connect
Double your output by Quick-Connecting two identical heaters with a single cable.

Turbo-Flow
During the summer season, when the incoming water is warmer the heater will automatically boost its output level to give you more flow capacity.

LASTS LONGER

Noritz tankless water heaters are extremely durable, lasting up to two times longer than traditional tank-type water heaters, and require little maintenance over their lifetime. Noritz wants you to feel confident using our products so we back all residential heaters with one of the best warranties in the industry.



SURPASSING THE EXPECTATIONS OF YOUR NEEDS IS OUR GOAL.

LEXUS PRECISION CRAFTSMANSHIP



Noritz takes pride in its craftsmanship. We only use the finest materials to provide you with the highest level of performance. Our manufacturing process allows us to have direct product quality control. We manufacture all of our own major components and we are the only tankless water heater manufacturer in the industry to have implemented the NPS Just-In-Time production line system, the same system used by Lexus.

BROADEST SELECTION



Noritz has the broadest selection of tankless water heaters in the industry. With 17 different models to choose from, we are confident that you will find the perfect unit for all your needs. In addition, we also have the most complete line of venting and accessories for our tankless water heaters to make installation as simple as possible.

UNMATCHED FLOW CAPABILITIES



Noritz is the only tankless manufacturer which allows you to connect and control up to 24 units together. With only one system controller our heaters can be connected for an unmatched flow of 316.8 GPM and 9.1 million Btu/h. Through this advanced technology Noritz can meet the flow requirements of even the most demanding applications.

ASME



Noritz is the first manufacturer whose tankless water heaters received the prestigious ASME Code Symbol Stamps H, HLW, and NB as being certified in compliance with the ASME Boiler and Pressure Vessel Code ("BPV Code"). Thus, Noritz has achieved the leadership position in the commercial tankless water heater industry reflecting the exceptional features of its products.